

Seward Glenn Mobility Planning and Environmental Linkages (PEL) Study



Virtual Public Meeting and Public Comment Period Summary

The Department of Transportation and Public Facilities, in collaboration with the Anchorage Metropolitan Area Transportation Solutions, on Wednesday, May 25, 2022, from 4:30 – 6:30 P.M. hosted a hybrid public meeting at the Fairview Recreation Center and online via Zoom as part of the Seward Glenn Mobility Planning and Environmental Linkages (PEL) Study.

76 Virtual Public Meeting attendees



ADVERTISING & PUBLIC OUTREACH



2 E-Blasts sent to 221 recipients



3 Facebook posts



50

flyers distributed to businesses and residents within the study area including:
Anchorage Senior Activity Center

Fairview Rec Center

Midtown Mall

Loussac Library

Natural Pantry

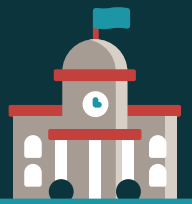
Secret Garden

Natural Health Center



Meeting information distributed to the What's Up and Federation of Community Council Listservs

4



meetings with local community groups



3,709 newsletters mailed



2 ads placed in Anchorage Daily News

1

info kiosks hosted at local businesses and organizations



5 meetings with Project Committees



3,713 postcards mailed

COMMENTS

Comment Period: May 23 – June 24, 2022

The public submitted a grand total of 151 comments.

25

received at the Public Meeting

20

received through the online comment form (20 commentors)

4

received through phone

13

received through email

12

received through the Technical Advisory Committee Meeting

7

received through the Agencies and Tribes Committee Meeting

12

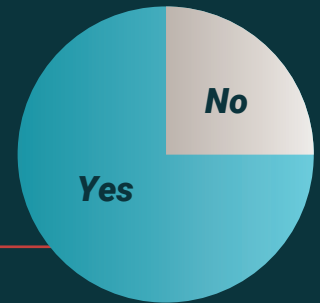
received through the Legislative Update Meeting

9

received through the Community Advisory Committee Meeting

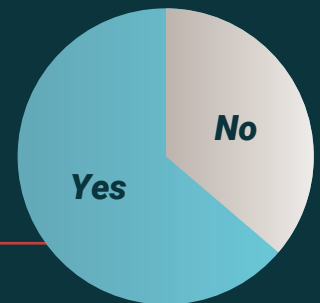
Responses with suggestions for the Purpose Statement

75% Yes, 25% No



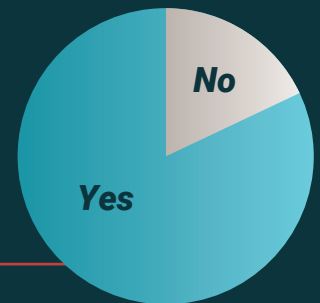
Responses with suggestions for the Needs Statement

65% Yes, 35% No



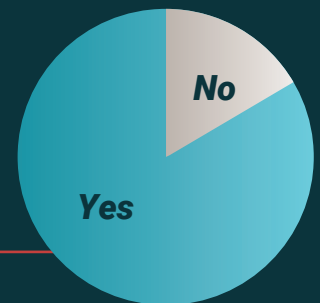
Responses with suggestions for the Alternative Selection Criteria

80% Yes, 20% No



Responses with design recommendations or alternatives for improving the corridor

79% Yes, 21% No



Seward ↔ Glenn

MOBILITY